



DAMID CR

Round enamelled winding wire of copper, heat resistant, class 200

Product name:

Damid CR- Gr 1
 Damid CR- Gr 2
 Damid CR- Gr 3

Specifications:

IEC 60317-13

UL approval:

Approved: Damid CR
 UL file no: E101843

Class: 200

Temperature index: $\geq 200^{\circ}\text{C}$
 Heat shock: 220°C

Conductor material:

Cu according to EN 1977/ASTM B49

Insulation:

Basecoat: THEIC-modified polyesterimide
 Overcoat: Polyamideimide

Properties:

- Good corona effect resistance
- High cut-trough temperature
- Heat resistant
- Good mechanical resistance

Field of application:

- Transformers
- Traction motors
- Power bridges
- Electric motors

Dimension range:

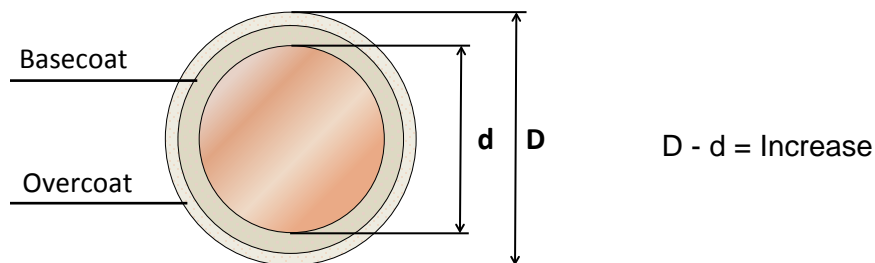
| | |
|---------------|--|
| Damid CR Gr 1 | $0,315 \leq \varnothing \leq 2,000 \text{ mm}$ |
| Damid CR Gr 2 | $0,315 \leq \varnothing \leq 2,000 \text{ mm}$ |
| Damid CR Gr 3 | $0,315 \leq \varnothing \leq 2,000 \text{ mm}$ |

Standard packaging:

$0,315 \leq \varnothing \leq 2,000 \text{ mm}$ 250, 250/400, 400/630

Shelf life:

10 years, under normal ambient conditions



DAMID CR

Round enamelled winding wire of copper, heat resistant class 200

Properties for DAMID CR

| Main characteristics | Test method | Property values | Test values for a DAMID CR sample (1,12 mm, Gr2) |
|------------------------------|-----------------|-----------------------------|--|
| Thermal properties | | | |
| Heat shock | IEC 60851 - 6.3 | ≥ 220°C | ≥ 240°C |
| Cut-trough | IEC 60851- 6.4 | ≥ 320°C | ≥ 320°C |
| Temperature index | IEC 60172 | ≥ 200°C ¹⁾ | ≥ 200°C ¹⁾ |
| Electrical properties | | | |
| Conductor resistance | IEC 60851 - 5.3 | 0,01709 Ωmm ² /m | 0,01709 Ωmm ² /m |
| Conductivity | 1/R | > 58 m/(Ωmm ²) | > 58 m/(Ωmm ²) |
| Breakdown voltage | IEC 60851 - 5.4 | IEC 60317-0-1 ²⁾ | 8,0 kV |
| Mechanical properties | | | |
| Elongation | IEC 60851-3.3 | IEC 60317-0-1 ²⁾ | 38% |
| Springiness | IEC 60851-3.4 | Springiness ³⁾ | IEC 60317-0-1 ²⁾ |
| | | Springback ⁴⁾ | ≤ 5° |
| Flexibility | IEC 60851-3.5 | Mandrel wind. ³⁾ | 1 x Ø |
| | | Stretching ⁴⁾ | min 32 % |
| Adherence | IEC 60851-3.5 | Jerktest ⁵⁾ | No loss of adhesion |
| | | Peeltest ⁶⁾ | min. 110 ⁷⁾ |

1. According to supplier certificate

2. Values depend on dimension

3. Up to an including 1,60 mm

4. Over 1,60 mm

5. Up to and including 1,00 mm

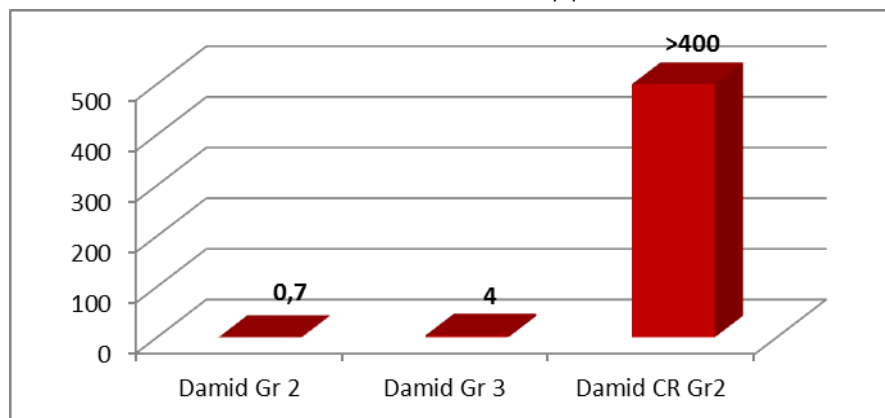
6. Over 1,00 mm

7. Revolutions x nominal dimension

Values above are for information only. All values noted are typical and can vary between lots and dimensions.

Lifetime of DAMID and DAMID CR under inverter duty

Test conditions: 16kHz 2,4 kV p-p 155°C



Test developed and performed by enamel supplier

The technical data included is up to date at the time of printing.

LWW reserve the right to make any amendments deemed necessary

Liljedahl Winding Wire

dahréntråd | isodraht | śląska | 利里达尔电磁线
liljedahl winding wire