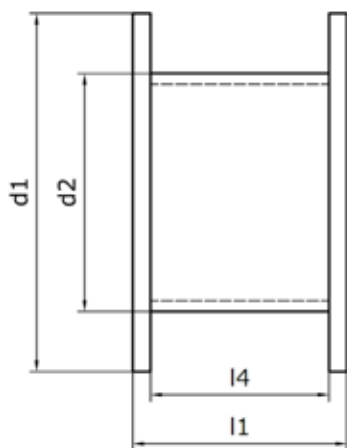


# CONTACT WIRE STRANDED CONDUCTORS



## STRANDED CONDUCTORS

Drum size Ident-No.	Max. Capacity	Drum weight Tare [kg]	Flange Ø d1 [[kg]	Barrel Ø d2 [mm]	Overall l1 [mm]	Coiling l4 [mm]
81	400	31	800	400	520	400
91	750	47	900	450	690	560
101	900	71	1000	500	710	560
121	1700	144	1250	630	890	670
141	2000	175	1400	710	890	670
161	3000	280	1600	800	1100	850

## CONTACT WIRE

F13	1500	160	1300	100	700	560
F14	2000	190	1400	1000	700	560
F16	3000	210	1600	1000	700	560
F18	2000	240	1800	1500	700	560
F19	2500	280	1900	1500	700	560
F20	3000	300	2000	1500	700	560

Other packaging on customers request.

	<b>XX - 000</b> YY	STANDARD PACKAGING - wooden drum, steel enforced - wooden parts are IPPC-marked (EXPORT)
--	-----------------------	--